

(a) A measurement is carried out to check the speed of a camera shutter of $1/15$ s. The camera is focused symmetrically on a rotating turntable which revolves at 33.3 ± 0.1 revolutions per minute and has a spot at its centre and at its circumference. A photograph shows the arc produced by the spot on the circumference subtends an angle of $12.4 \pm 0.1^\circ$ at the centre of rotation. What is the correct exposure time?

[3]

(b) The temperature coefficients of resistance, α , of certain alloys are positive and others are negative. They have resistance per unit length of r . This makes it possible to produce a resistor, using the two wires in series, which does not vary with temperature. The values of r , at 0°C , and α are given in Table 1.b for constantan and manganin. These wire have lengths L_c and L_m respectively at 0°C . What values of L_c and L_m are required to produce a $5.0\ \Omega$ resistor?

Wire	$r / \Omega\text{m}^{-1}$	$\alpha / ^\circ\text{C}^{-1}$
Constantan	6.3	-3.0×10^{-5}
Manganin	5.3	$+1.4 \times 10^{-5}$

Table 1.b

[5]

(c) A monochromatic sodium lamp, wavelength $\lambda = 6.0 \times 10^{-7}$ m, radiates 100 W of radiation uniformly in all directions. At what distance from the lamp will the photons have an average density of 10^6 m^{-3} ?

[5]

(d) Protons are accelerated from rest through a p.d. of 2.0×10^6 V and fired at a gold ($^{197}_{79}\text{Au}$) foil. What is the distance of closest approach of a proton to the gold nucleus?

[4]

(e) Figure 1.e is a section through a smooth parabolic metal bowl, which can be rotated about its vertical axis of symmetry, the y - axis. Its equation, in Cartesian coordinates, is $y = ax^2$. The gradient at the point (x, y) is $2ax$.

There is one angular speed of rotation, ω , of the bowl about the y - axis for which a small metal sphere remains at rest relative to the rotating bowl, wherever it is placed on the inner surface. Determine ω in terms of a and g .

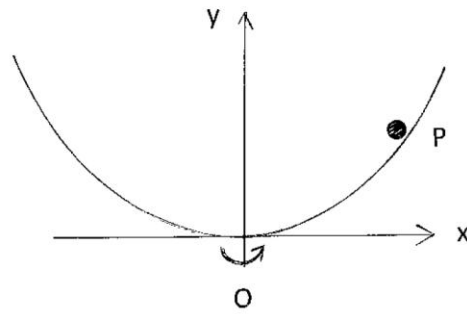


Figure 1.e

[4]

- (f) A ray of light is incident on a 60° glass prism of refractive index 1.500 at an angle of incidence of 48.59° . Determine:
- (i) the angle of emergence, θ , from the prism; i.e. the angle between the emergent ray and the normal to the prism face.
 - (ii) the angle of deviation of the ray, δ .

[5]

(g) A man blowing a whistle of frequency f moves away from a stationary observer at speed u . Derive the formula for the frequency f_1 heard by the observer. The velocity of sound is c .

If a man blowing a whistle of frequency 500 Hz moves away from a stationary observer towards a fixed wall, in a direction perpendicular to the wall at 2.00 m s^{-1} , determine the beat frequency heard by the observer if $c = 330 \text{ m s}^{-1}$.

[6]

(h) Determine, in Figure 1.h, the total resistances, R_{TBC} , across BC, R_{TBD} across BD and R_{TBA} across AB.

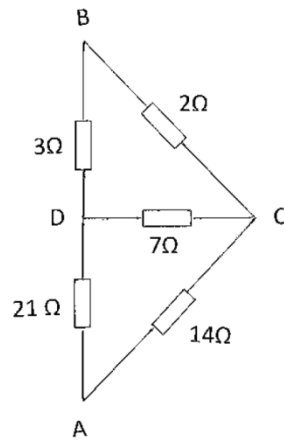


Figure 1.h

[6]

(i) What mass of radium, mass number 226, half-life of 1620 years, and an α emitter, is required to produce an average of 10 α particles per second?

[4]

- (j) An a.c. voltmeter displays the rms value of the voltage, V , for a.c. signals and also for periodic signals that are not sinusoidal. What reading will it display if connected to a periodic voltage, period $4T$, that changes instantaneously from $+10\text{ V}$ to -2 V to $+4\text{ V}$ repeatedly, the voltages lasting, respectively, for T , T and $2T$?

Determine the following;

- (i) the mean voltage i.e. V_m .
- (ii) the rms voltage i.e. V_{rms} .
- (iii) the rms value of deviation from the mean, $(V - V_m)$ which is V_{rmsm} .

[4]

(k) Assuming the Earth is a homogeneous sphere, calculate the fractional difference between the acceleration due to free fall at the Earth's equator and at the poles, indicating which is the greater. You may not use a value of g given in the constants table as that is an average value, neither correct at the poles nor at the equator.

Mass of the $M_E = 5.98 \times 10^{24}$ kg Radius of the Earth $R_E = 6.38 \times 10^6$ m

[8]

- (l) A horizontal square wire loop of side 4.00 cm has a resistance, R , of $2.00 \times 10^{-3} \Omega$. The loop is situated in a vertical downward magnetic field of 0.700 T. When the field is switched off, it decreases to zero, at a uniform rate, in 0.800 s.

Determine:

- (i) the induced current, I , and its direction in the loop.
- (ii) the energy dissipated in the loop.

[7]

(m) Two well separated identical conducting spheres of radius 10.0 cm are charged to +200 V and +400 V. If they are joined by a long wire, how much heat is generated?

[10]