



**PLAS Y BRENIN**

National Mountain Sports Centre

# Scottish Classic Winter Climbs

## Andy French. February 2022

**Saturday 19<sup>th</sup> February 2022.** Train Winchester to Glasgow. Citylink 914/915 to North Ballachulish. Overnight at the *Woolly Rock*.

**Sun.** Walk along cycle route 78 to Oban. To **HF Altshellach** for 1600. Briefing with PYB.

**Mon.** *Curved Ridge* (II/III). **Buachaille Etive Mor.** Clear, slight winds on summit.

**Tues.** *Garadh's Gully* (II), North Face of **Ben Nevis.** Blizzards!

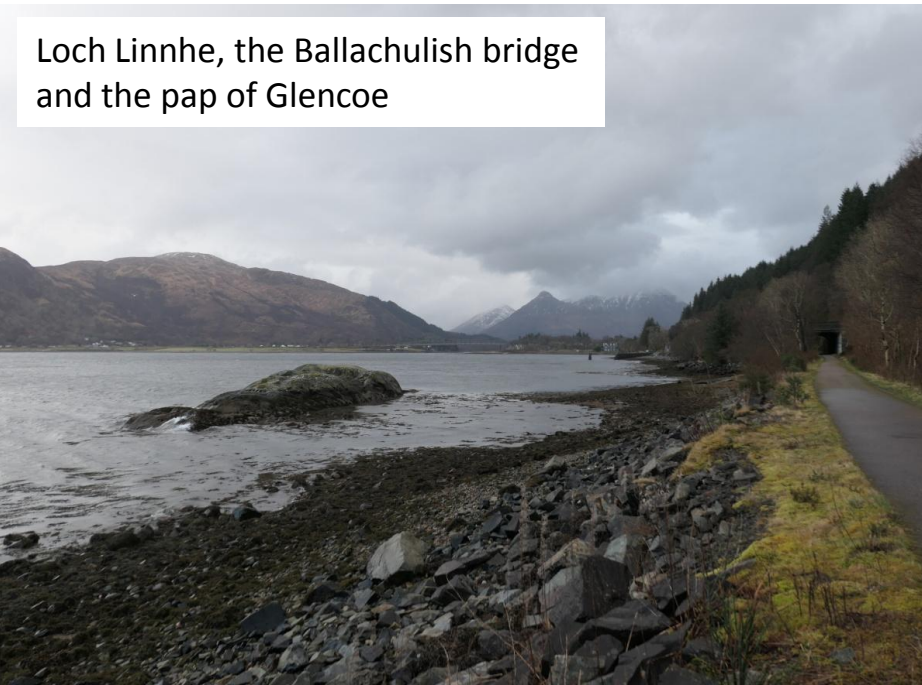
**Weds.** **Ice Factor, Kinlochleven.** Stay indoors! High winds, lightning...

**Thurs.** *Zig-Zags* (I) on **Gearr Aonach.** Clear morning, developing blizzard PM.

**Fri.** *Taxus* (III). **Beinn an Dothaidh.** Excellent AM conditions, cloudy summit. Light winds. Huge icicles and beautiful ice route. Fantastic airy summit ridge!

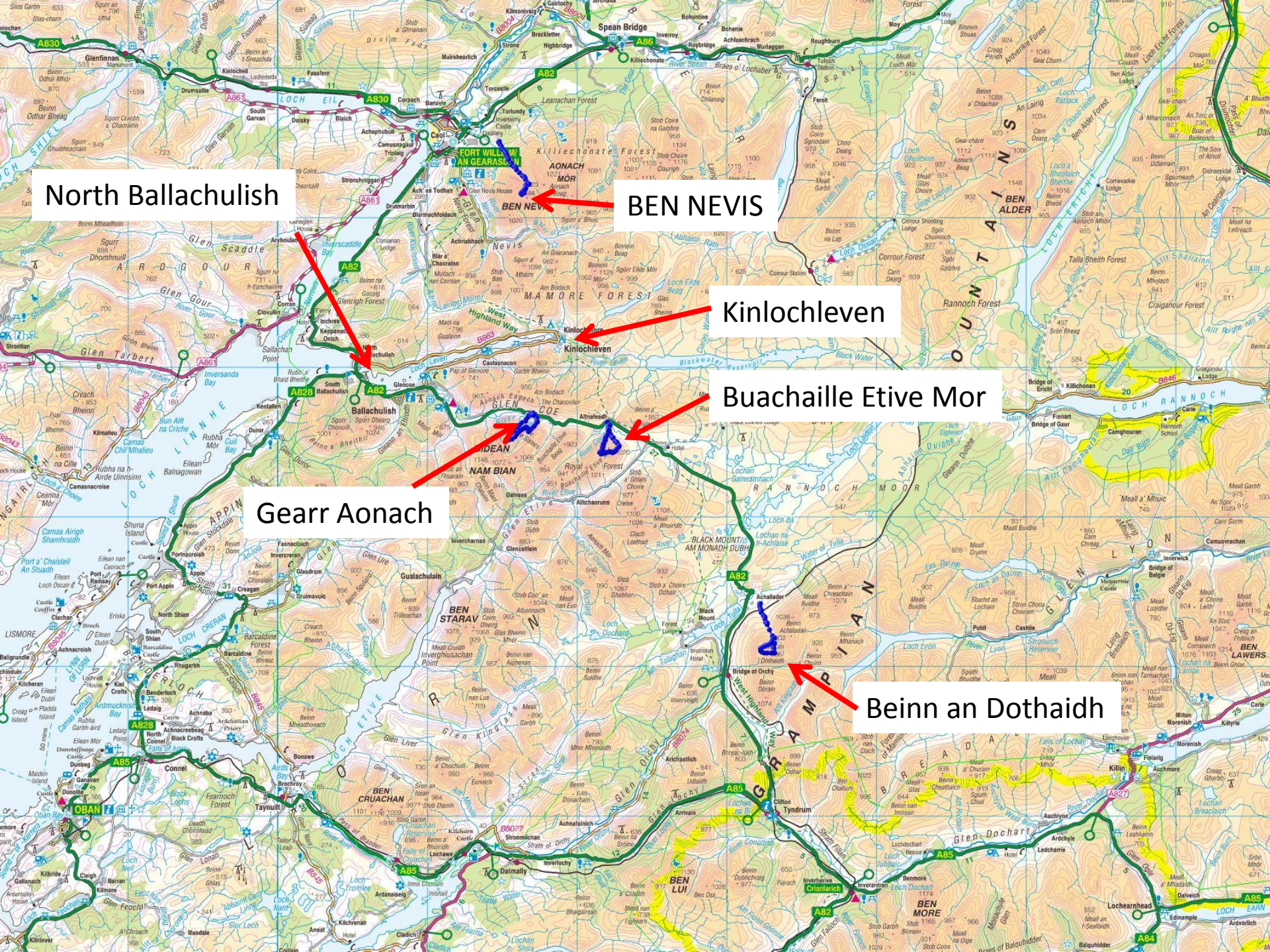
**Sat.** Return to Winchester (915 bus to Glasgow, train to Euston, Northern line tube, then Waterloo train to Winchester).

Loch Linnhe, the Ballachulish bridge and the pap of Glencoe



HF Altshellach, North Ballchulish





North Ballachulish

BEN NEVIS

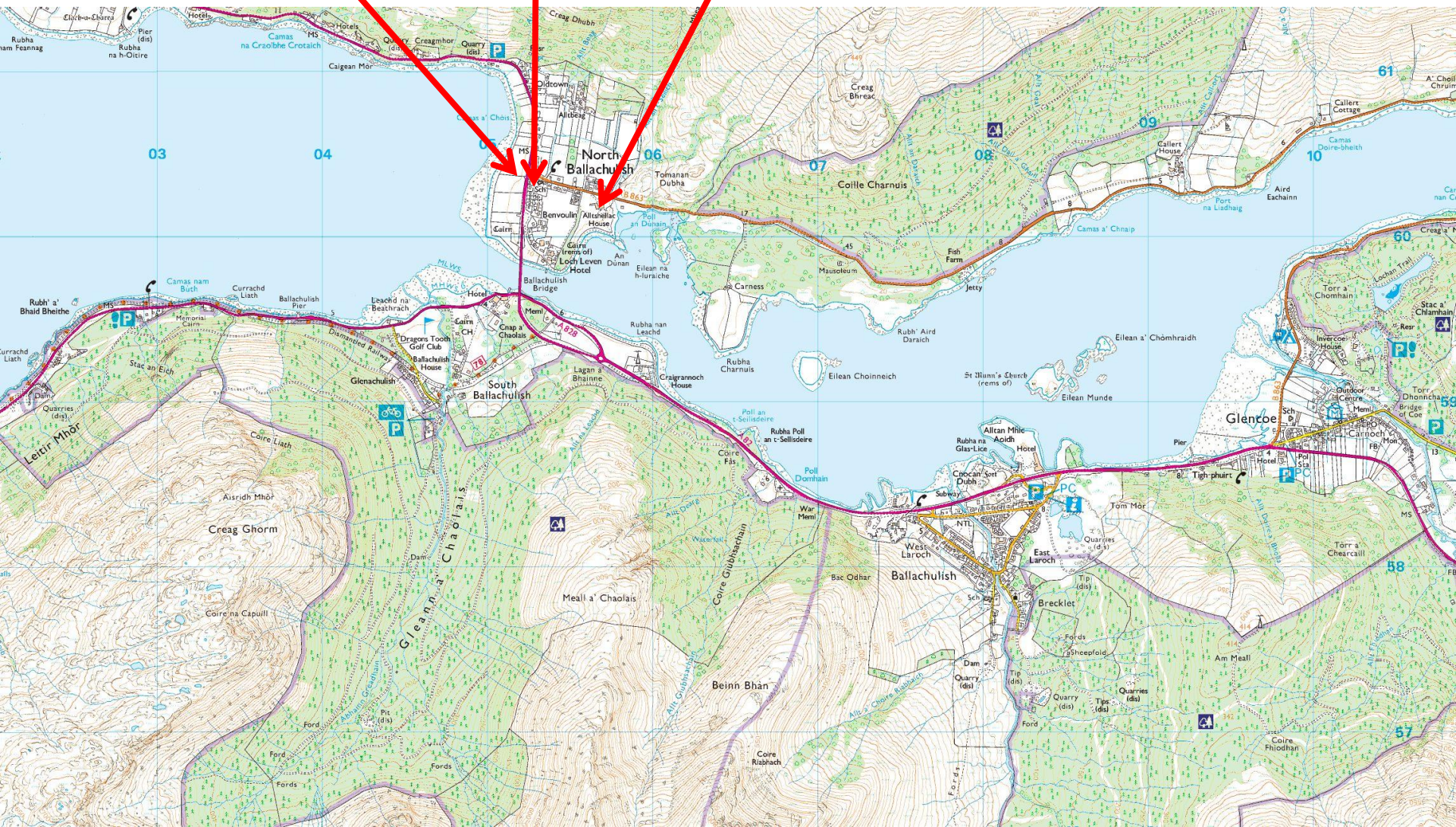
Kinlochleven

Buachaille Etive Mor

Gearr Aonach

Beinn an Dothaidh







Route 78 to Oban



Loch Linnhe

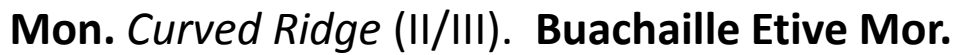


Ardour peninsula



North Ballachulish and Glencoe





**Mon. *Curved Ridge* (II/III). Buachaille Etive Mor.**







Rannoch Moor from Curved Ridge











Beinn a Chrulaiste









Rannoch Wall on Buachaille Etive Mor



Stob Dearg (1,022m), summit #1 of Buachaille Etive Mor











Glen Etive





Stob Dearg (1,022m), summit #1 of Buachaille Etive Mor





Stob na Doire





Buachaille Etive Beag



Both 'Buckles'

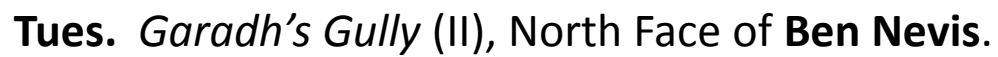






Larig Gartian









Blizzard conditions on *Garadh's Gully* on  
the North Face of Ben Nevis







A guide fixing ice screws on *Garadh's Gully*, Ben Nevis. 'Rime time' for the clients!





A welcome sheltered belay on *Garadh's Gully*, Ben Nevis



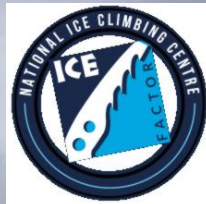
Returning down Coire na Ciste to the CIC Hut



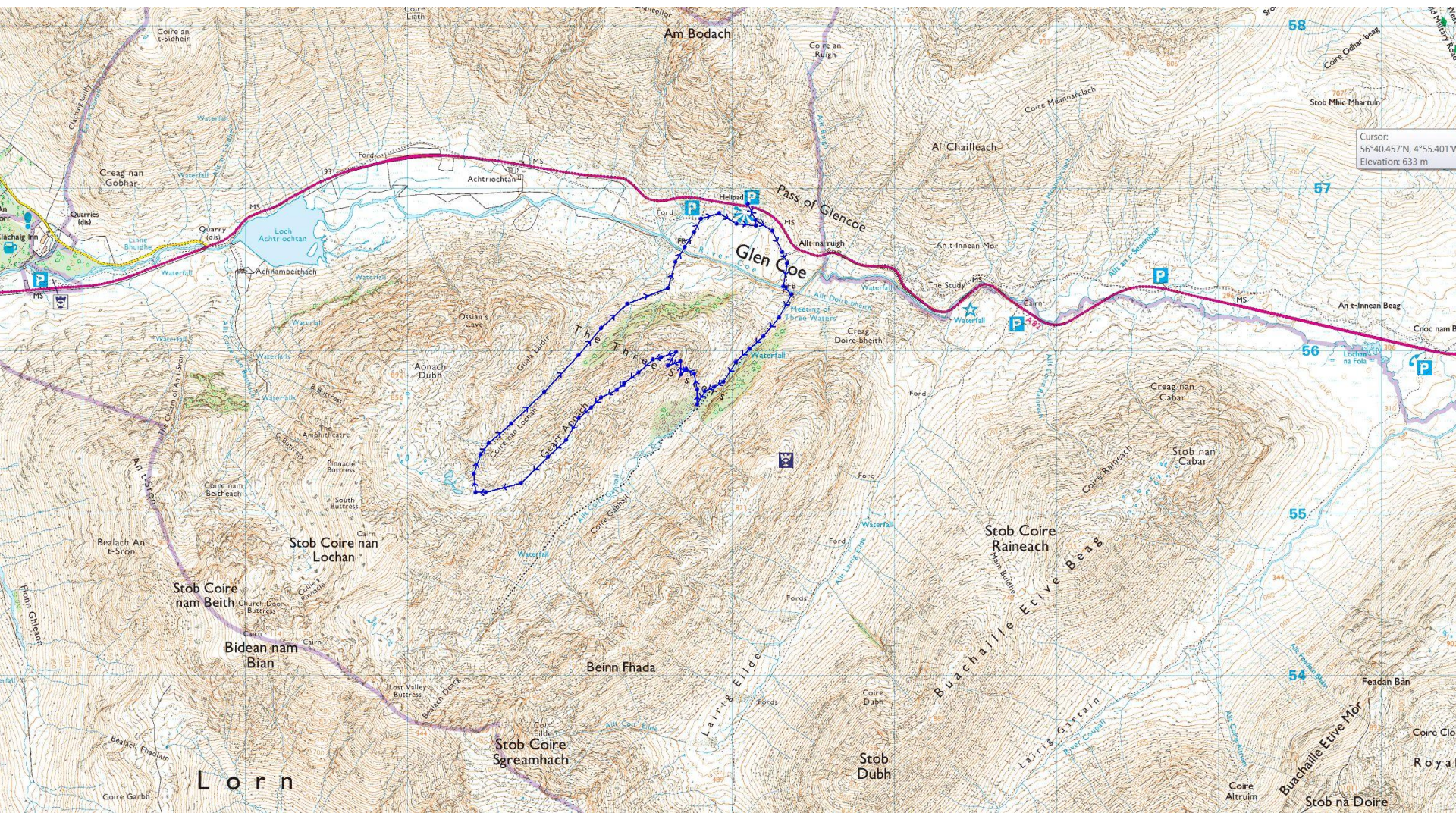




The [Ice Factor](#) in Kinlochleven







**Thurs. Zig-Zags (I) on Gairr Aonach.**





*Three Sisters of Glencoe* (Beinn Fhada, Gearr Aonach, Aonach Dubh)



Glencoe snow!



Steve and Stevie



An icy Gearr Aonach



Max, Cath and Dan





An ice axe and body belay on the  
Zig Zags, Gearr Aonach





Glencoe and Beinn a Chrulaiste





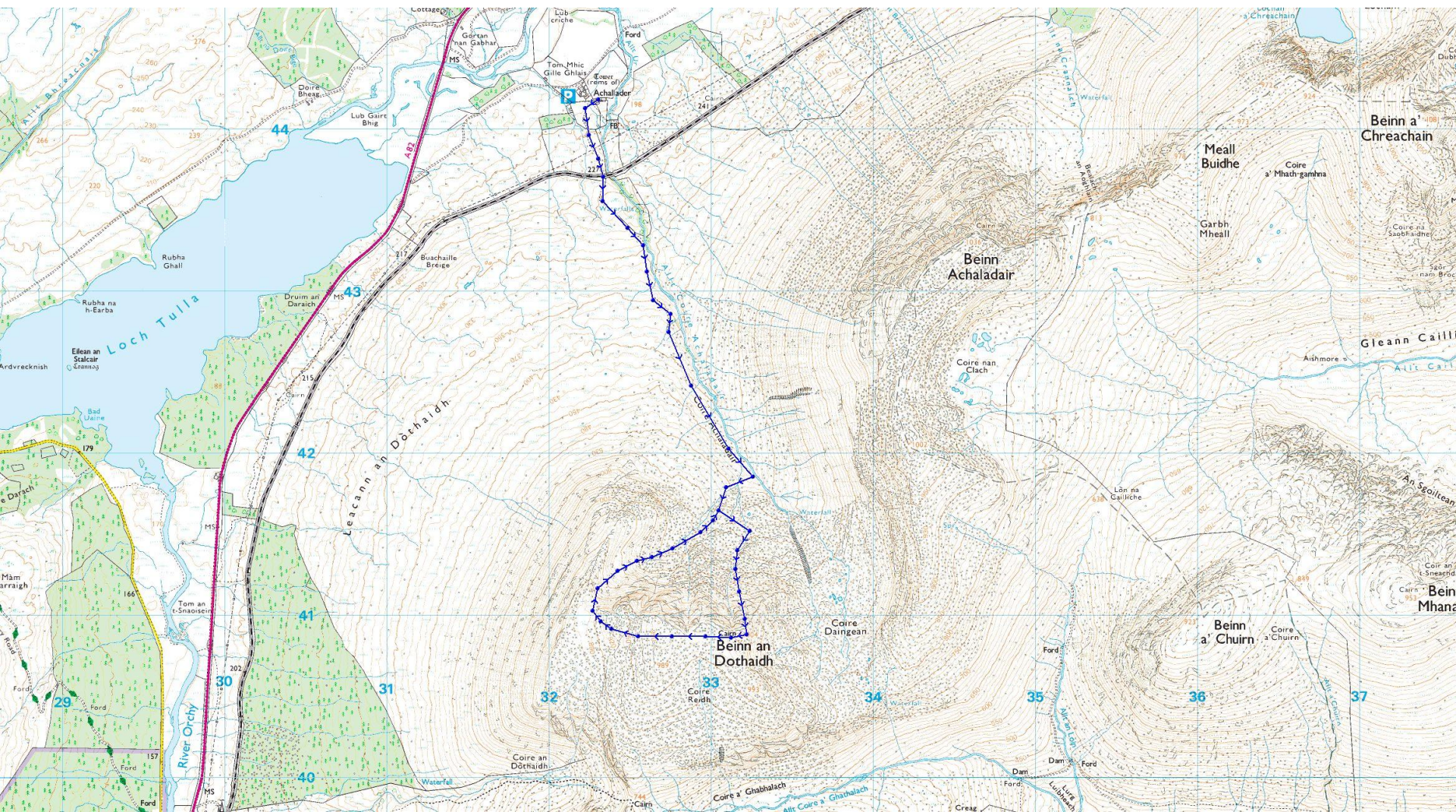






Safe return after a blizzard and huge gusts in Coire nan Lochan!





**Fri. *Taxus* (III). Beinn an Dothaidh.**



Loch Tulla



To Beinn an Dothaidh



Dave, Max, Stevie, Cath and Dan







Dave leading on *Taxus*













Cath leading on *Taxus*





Cath, Dan and Max on a wee ledge belay!





Hanging out.... Kick you own ledge!

